

二十四眼映画村

Shioe Beach

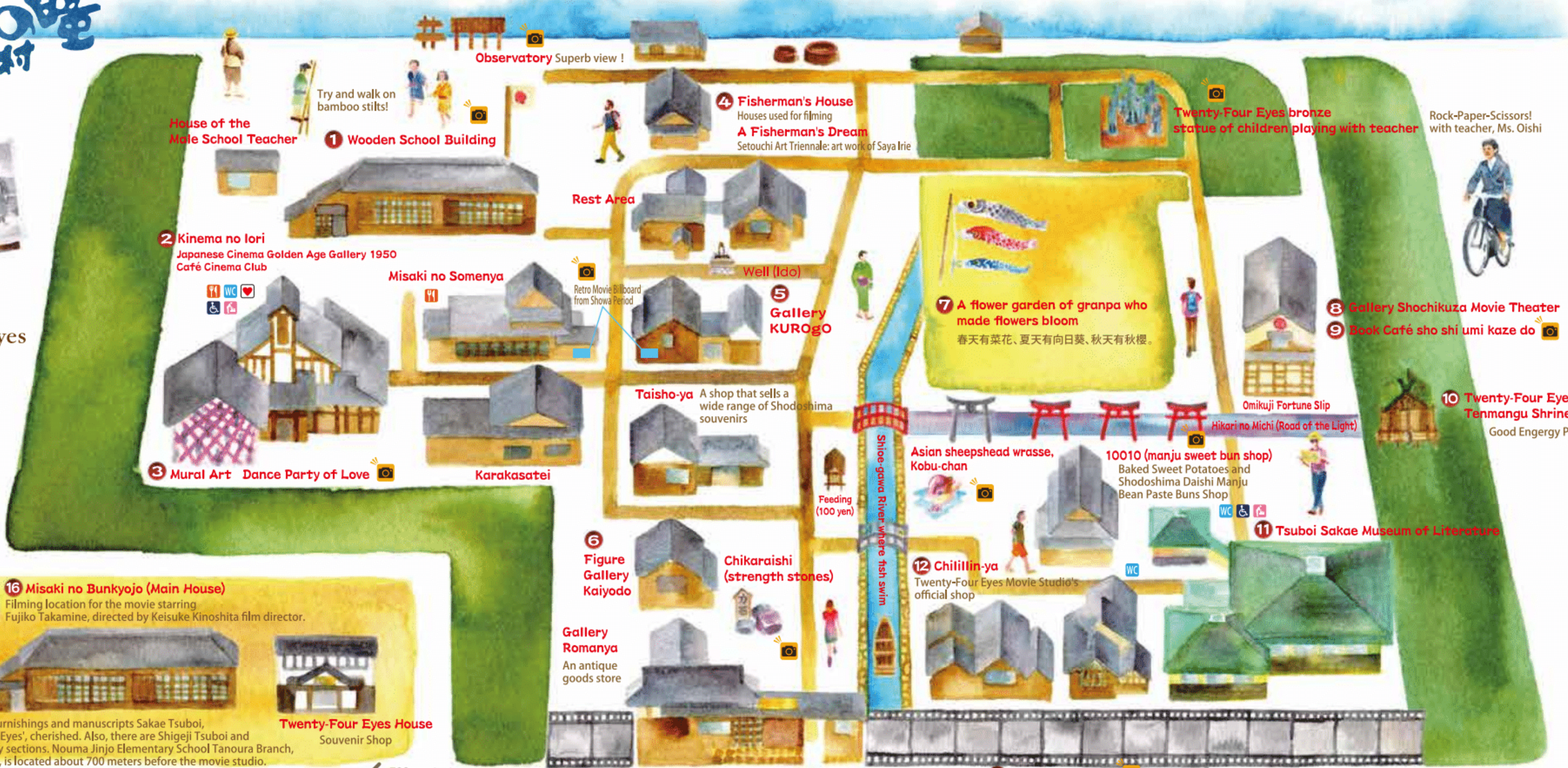


Shodoshima
Twenty-Four Eyes
Movie Studio



The museum exhibits furnishings and manuscripts Sakae Tsuboi, author of 'Twenty-Four Eyes', cherished. Also, there are Shigeji Tsuboi and Denji Kuroshima display sections. Nouma Jinjo Elementary School Tanoura Branch, the setting of the novel, is located about 700 meters before the movie studio.

- Restaurant
- Toilet
- AED
- Handicap Bathroom
- Baby Chair
- Shioe Beach



House of the Male School Teacher

1 **Wooden School Building**
Try and walk on bamboo stilts!

Observatory Superb view!

4 **Fisherman's House**
Houses used for filming
A Fisherman's Dream
Setouchi Art Triennale: art work of Saya Irie

Twenty-Four Eyes bronze statue of children playing with teacher

Rock-Paper-Scissors! with teacher, Ms. Oishi

2 **Kinema no Iori**
Japanese Cinema Golden Age Gallery 1950
Café Cinema Club

Rest Area

Misaki no Somenya

Well (Ido)

5 **Gallery KUROGO**

7 **A flower garden of granpa who made flowers bloom**
春天有菜花、夏天有向日葵、秋天有秋樱。

8 **Gallery Shochikuza Movie Theater**

9 **Book Café sho shi umi kaze do**

3 **Mural Art Dance Party of Love**

Karakasatei

Taisho-ya A shop that sells a wide range of Shodoshima souvenirs

Omikuji Fortune Slip

Hikari no Michi (Road of the Light)

10 **Twenty-Four Eyes Tenmangu Shrine**
Good Energy Place!

Asian sheepshead wrasse, Kobu-chan

10010 (manju sweet bun shop)
Baked Sweet Potatoes and Shodoshima Daishi Manju Bean Paste Buns Shop

11 **Tsuboi Sakae Museum of Literature**

6 **Figure Gallery Kaiyodo**
Chikaraishi (strength stones)

12 **Chilillin-ya**
Twenty-Four Eyes Movie Studio's official shop

Gallery Romanya
An antique goods store

24 **Twenty-Four Eyes House**
Souvenir Shop

← 700m

Entrance (Reception)

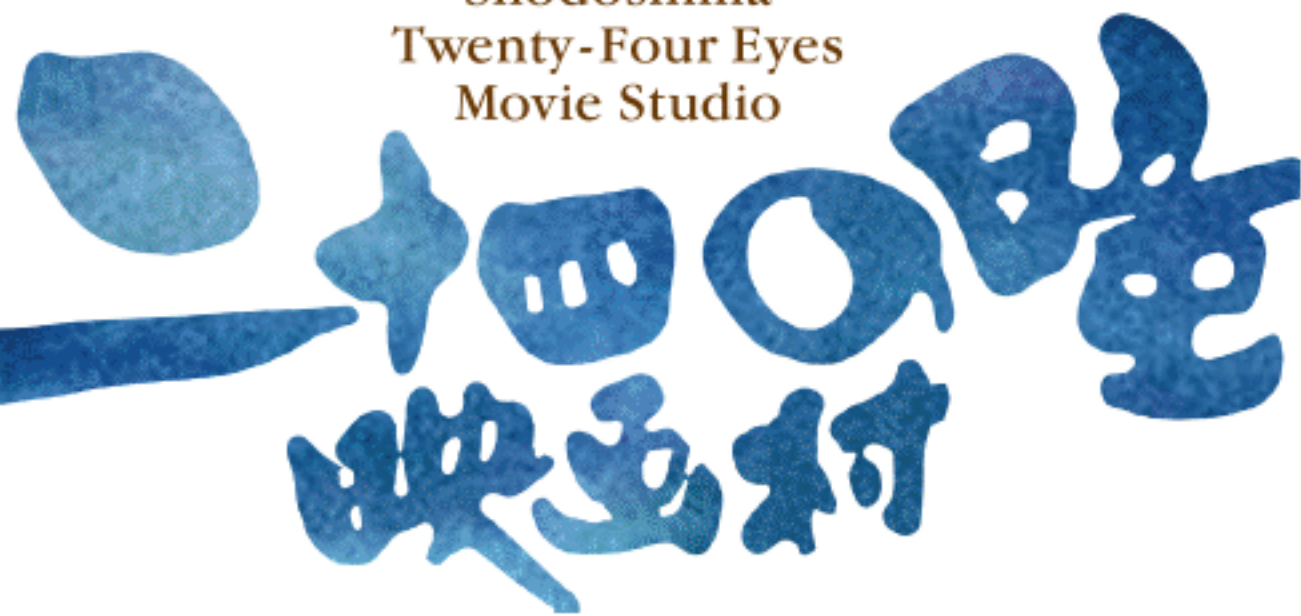
13 **Cinema Art Wall**

15 **Ferry Boat Stop**
Non-stop from Olive Navi

14 **Bollard of Love**
Setouchi Art Triennale: art work of Hisakazu Shimizu



Shodoshima
Twenty-Four Eyes
Movie Studio



Guide Map



Twenty-Four Eyes Movie Studio

The village of Showa era is recreated where the movie 'Yokame no Semi (Cicada on the Eighth Day)' and the masterpiece of Sakae Tsuboi's 'Twenty-Four Eyes' as well as various dramas and commercials are filmed.

1 Wooden School Building

Movie set of Nouma Jinjo Elementary School Tanoura Branch. You will find the view of Seto Inland Sea outside of the window tranquilizing.



2 Kinema no Iori (Iori)

Japanese Cinema Golden Age Gallery 1950

A gallery where you can be surrounded by the atmosphere of Showa Era and see images and photos of Japanese movies.



Café Cinema Club

It is a space where you can enjoy the nostalgic Showa era "School Lunch Set" and Shodoshima's popular and local's favorite food "Hishio-don" in the retro atmosphere surrounded by the folk materials of Shodoshima.



3 Mural Art Dance Party of Love

Here's the instagrammable spot! You can get marriage proposal from a handsome gentleman with a bouquet or enjoy dancing with an old gentleman.

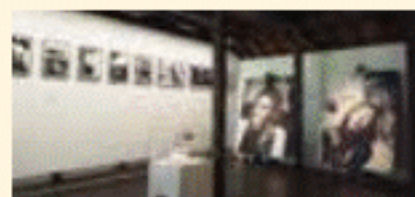
4 A Fisherman's Dream

In this side story, the focus of the director's artistic vision is turned on a fisherman featured in the classic Japanese film Twenty-Four Eyes. In the traditional Japanese home featured in the film appears a somewhat unusual, endearing fish goddess statue which the fisherman sees in a dream. Drawings of fish from around world, as well as 3D artwork made from the eraser shavings from the drawings, will be exhibited.



5 Gallery KUROGO

A gallery that hosts various photos and arts exhibitions.



6 Figure Gallery Kaiyodo

This is an iconoclastic exhibition featuring realistic, lively, and original figures. Over 90 works from the categories of film, heroes, art, culture, and nature will be on display and available for sale.



7 A flower garden of granpa who made flowers bloom

The flower garden changes according to the each season. Canola flower and carp streamers in spring, sunflowers in summer and cosmoses in autumn. Oleanders (Kyo-chikutou) that author Tsuboi Sakae loved are planted around it.



8 Gallery Shochikuza Movie Theater

A retro movie theater that has the look of a movie theater from the Showa Era. The movie 'Twenty-Four Eyes' is playing. Please enjoy the splendor of Japanese movies on the big screen you can watch comfortably. As a special screening, 'GEKI x CINE', a movie of theatrical troupe Gekidan☆Shinkansen is playing. Please check the program on the website.



Twenty-Four Eyes Movie

晴顯示時間

・9:00~11:38 ・11:39~14:17 ・14:18~17:00

9 Book Café sho shi umi kaze do

It is on the second floor of a tasteful building that imitates a soy sauce storehouse factory. A book cafe that provides a space you can relax. Actress Hideko Takamine's gallery and "Gekidan☆Shinkansen" booth are set up inside. The view from the window is amazing!



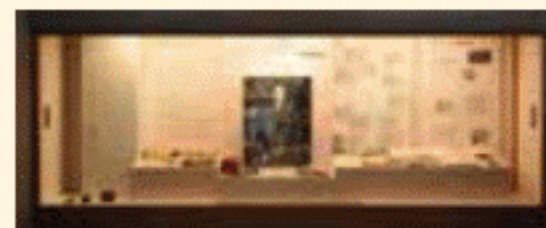
10 Twenty-Four Eyes Tenmangu Shrine

Tenmangu Shrine received a divined spirit from Dazaifu Tenmangu Shrine. The omikuji fortune slip with Shakespeare's famous quote is also recommended. The Hikari no Michi (road of the light) which leads to Tenmangu Shrine is a path of hope leads to the future. Let's walk with prayer in your heart.



11 Tsuboi Sakae Museum of Literature

The museum exhibits furnishings and manuscripts Sakae Tsuboi, author of 'Twenty-Four Eyes', cherished. Also, there are Shigeji Tsuboi and Denji Kuroshima display sections.



12 Chilillin-ya

Twenty-Four Eyes Movie Studio's official shop. The bottled milk and the salt caramel flavored "premium soy sauce soft-serve ice cream" from the popular soy sauce store "Yamaroku soy sauce" are recommended.



13 Cinema Art Wall

Japanese film wall panel art. (Photos provided by Shochiku Co., Ltd.) Total length of 54 meters gives such powerful presence. It brings back the famous scenes in which stars of the silver screen played.



14 Bollard of Love

Setouchi Art Triennale 2016: art work of Hisakazu Shimizu 'Bollard of Love'



15 Ferry Boat Stop

A ferry boat that connects Twenty-Four Eyes Movie Studio and the Olive Navi Pier (Olive Beach).

Discount on a combination ticket! Round-trip boat ticket + Movie Studio Entrance Ticket

・Adults (middle school students and over) ... 1,790yen → 1,550yen Place of Sale: Olive Navi/Roadside Station Shodoshima Olive Park Bay Resort Hotel Shodoshima
・Children (Elementary school students) ... 880yen → 770yen

16 Misaki no Bunkyojo (Main House)

The Tanoura Branch School was the setting for the novel 'Twenty-Four Eyes'. The desks, the organ and the works of the children are left as they were in the classroom. They will bring back the memories of the old days.

Combination ticket with "Misaki no Bunkyojo"

・Adults (middle school students and over) ... 1,030 yen → 880yen * There is no combination ticket for infants. They can enter the village for free.
・Children (Elementary school students) ... 500 yen → 440yen

Get dressed in a rental kimono and travel back to Showa Era!

(Please ask at the reception desk)

You can rent Kasuri Kimono. How about wearing a traditional kimono and walk around the village? (The service might not be available. Please ask the staff first.)

一套
500yen



Address Kagawa-ken, Shozu-gun, Shodoshima-cho, Taura Ko 931
TEL 0879-82-2455
Parking Free Parking (150 spaces)
Hours 9:00 ~ 17:00
Open everyday
Entrance Fee Adults (middle school students and over) 790 yen
Children (Elementary school students) 380 yen

Access:

Ferry from Takamatsu Port
Take the bus bound for Tanoura Movie Studio Near the last stop "Taura Movie Studio".

路線公共汽車 Taura 電影村出發時間
(12:10 / 14:25 / 16:00 / 17:50)

從主要旅遊目的地開車所需的時間
從寒霞溪索道 45分鐘
從橄欖公園 30分鐘

Non-stop from Olive Navi

Boat is convenient (approximately 10 minutes).
(* Boatman's phone number: 090-7781-5112)

