

# A Journey of the Five Senses in Sanuki City

## H 歴史 History

### ■ 平賀源内 (1728-1779)

## Hiraga Gennai

He restored an “elekiter,” a Dutch device that generated static electricity, and he thus became famous as the first person in Japan to produce electricity.

### ■ 平賀源内記念館 B2

## Hiraga Gennai Museum

The museum opened in Spring of 2009 with exhibits where you can see the achievements of Gennai in the fields of natural history, science, literature, and art.



Museum TEL : 087-894-1684  
Former Residence and Medicinal Garden TEL : 087-894-5513  
Business Hours : 9:00 - 17:00  
Closed : Mondays  
(Open if a holiday falls on a Monday, closed the next day)  
Access : 10 minutes from the Takamatsu Expressway's Shido Interchange  
5 minute walk from Shido Station on the JR Kotoku Line.  
5 minute walk from Kotoden Shido Station on the Kotoden Shido Line.

### ■ 平賀源内旧邸・薬草園

## Hiraga Gennai's Former Residence and Medicinal Garden

B2

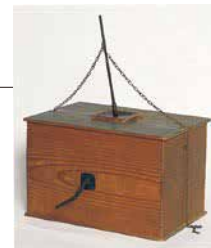


Just a few minutes walk from the museum is the place where Gennai was born, the “Former Residence of Hiraga Gennai,” where you can find a bronze statue of Gennai, his medicinal garden, and his ceramics workshop.



### ■ エレキテル Elekiter

Of the two elekiters produced during the middle of the Edo Period and still extant today, one is on display here.



### ■ おへんろ交流サロン

## Henro Salon B5

With pictures and historical records concerning the Shikoku Henro Pilgrimage, the Henro Exchange Salon is a place where pilgrims on the trail can exchange information and interact with the local people. There is also a rest space that pilgrims are free to come and use.



TEL : 0879-52-0208  
Business Hours: 9:00-16:00 (Last entry by 15:30)  
Access : JR Kotoku Line : Exit at JR Zoda Station,  
15 minute drive south by car  
Kotoden Nagao Line : Exit at Nagao Station (final stop),  
10 minute drive south by car  
Takamatsu Expressway : 20 minute drive south from the Shido Interchange  
Tokushima Expressway : 30 minute drive north from the Waki-machi Interchange  
<http://www.geocities.jp/sanukimaeyamanet/ohenro/index.html>



## Hanashizume-no-matsuri Festival

### ■ 鎮花祭

Hanashizume-no-matsuri is a festival for praying to the gods for the easing of the afflictions from diseases that are most prevalent during the times when the

cherry blossoms are falling. Around a hanamikoshi (a portable festival shrine bedecked with flowers) gallant young warriors, children, and dancing girls parade in and out of the town's cherry blossom-lined streets. Held in the beginning of April.

### ■ あばれみこし Abare-mikoshi

Young local people paint their faces, wear worn out clothes, and go crazy throughout the town. As a finale, they throw a portable shrine called the "Abare-mikoshi" (Riot Shrine) and even some of the onlookers into the pond in this violent yet humorous festival. Held in mid-October.



### ■ 多和神社秋季大祭 Tawa Shrine Fall Festival

With events on the eve of the festival as well as the day of, this festival takes place over a span of two days. People from eight different districts tote large portable shrines called chosa around town. These chosa are carried by only 8 men, who must make a courageous show of strength as they turn circles with their heavy load - a spectacle not to be missed! Held in mid-October.

### ■ 形代流し・曲水の宴 Katashiro Nagashi and Kyokusui no Utage

Katashiro Nagashi is a religious and cultural event, dating back long ago, in which people send dolls made of washi paper and representative of their hopes for sound health floating down a small stream. The Kyokusui no Utage is an event which developed in connection to an old custom in the Kyoto Imperial Court where a person standing upstream would send a cup of sake floating toward a group of poets below, and if a poet could not compose a poem by the time it arrived, he or she would be forced to drink. In the current ceremony here women dressed in the clothing of Imperial Court Ladies of old compose impromptu Japanese waka poems. Held in late July.



### ■ 長尾寺力餅運搬競技 Nagaoji Chikaramochi Strength Tournament

During the Dai-Hōyō (Great Memorial Service), in which people pray for a rich harvest of the 5 major grains and peace in the land, fuku-mochi (lucky rice cakes) and other things are thrown from the upper floor of the Main Hall to the people below. Afterwards, the Chikaramochi Strength Tournament is held in which strong men try to lift and carry a heavy load farther than the other competitors. The load consists of the upper and lower part of a massive kagami-mochi rice cake and the pedestal on which it rests called the sanbō, all of which comes to a total of 150 kilograms! (Chikaramochi is a pun that means both "having strength" and "rice cakes that bestow strength when eaten"). Held in early January.

## 遊び・体験

# Entertainment and Fun Experiences

### ■ 海沿いの広大な松原

## 津田の松原 (県立琴林公園)

D 4

# Tsuda no Matsubara:

an Expansive Pine Grove Along the Beach (Prefectural Kinrin Park)

An azure sea, white sandy beaches, and shining green pine trees come together over this continuous 1 kilometer stretch that includes old pine trees more than 600 years old and pine trees with neagari, or raised roots, that are visible above ground.



### ■ 七福神の松 Pine Trees of the Seven Lucky Gods



Sacred straw ropes are hung on the Pine Trees of the Seven Lucky Gods, the seven splendid, ancient pine trees located in the middle of the Matsubara Pine Grove.

### ■ 願い橋・叶え橋

## Negai-bashi/Kanae-bashi Bridge



This bridge has two names. When you travel out across the bridge, it is called "Negai-bashi Bridge" (The Bridge for Making Wishes). When you return back across the bridge, it is called Kanae-bashi Bridge (The Bridge of Dreams Come True).

### ■ ドルフィンセンター

# Dolphin Center

D 3

This is a facility where people of all ages can enjoy interacting with dolphins in a natural setting. At the Dolphin Center we are providing enlightening means toward environmental education as we provide support to people with disabilities through an experiential environment centered on dolphins. You can feed the dolphins and enjoy swimming with them.



TEL : 0879-23-7623

Access :

By car : Exit the Takamatsu Expressway's Tsuda Higashi IC, take Route 11 (National Highway) in the direction of Takamatsu. Turn right at Tsuruwa Yochien Minami (the third traffic light).

From Michi no Eki : Tsuda no Matsubara :

turn left at the 6th traffic light. JR Kotoku Line :

1. Exit at JR Tsuruwa Station, 20 minute walk

2. Exit at JR Sanuki Tsuda Station, 40 minute walk or 5 minute taxi ride

(The Tokkyu Express train stops at Sanuki Tsuda Station)

By highway bus : Exit at the Tsuda Bus Stop, 30 minute walk, 5 minute taxi ride

<http://www.j-dc.net/>



## ■ 大串自然公園 C 1

# Ohkushi Nature Park

TEL : 087-894-1114  
 Access :  
 Kotoden Shido Line,  
 15 minutes by car from Shido Station  
 JR Kotoku Line,  
 15 minutes by car from Shido Station

This is a place where you can fully enjoy the beauty of nature. Inside the park are the Green Hill Ohkushi (Ohkushi Onsen), a great place for lodging; the Sanuki Winery, Shikoku's only wine makers; and many other appealing facilities that you can enjoy. At the tip of the peninsula is the "Theatron," an outdoor concert amphitheater, designed with an Ancient Greek Theater motif, where concerts are held every summer. The Seaside Corridor has an athletic field, cottages, and a car camp site.



## ■ シーサイドコリドール

### Sea Side Corridor C 1

TEL : 087-895-1150  
 Closed : Tuesdays



## ■ さぬきワイナリー Sanuki Winery C 1

TEL : 087-895-1133  
 Business Hours : 9:00 - 16:00  
 Closed : Tuesdays (open for business on holidays)  
<http://www.sanuki-wine.jp/>

At Shikoku's only winery you can buy wine made with grapes grown in Sanuki City, take a tour to see the wine making process, and taste test our excellent products.



## ■ テアトロン C 1

### Theatron



## Flower Viewing Sites | 花の名所 |

## ■ みろく自然公園 Miroku Nature Park D 4

TEL : 0879-43-5200  
 Access :  
 By train : Exit the JR Kotoku Line at JR Sanuki Tsuda Station, 10 minute by car  
 By bus :  
 Take the Takamatsu-Hiketa Line that goes through Nagao and exit at the "Miroku Shizen Koen-mae" Bus Stop, 10 minute walk  
<http://www.city.sanuki.kagawa.jp/original/miroku/>



This is a place where you can enjoy a variety of leisure and entertainment during any season. There are the outdoor facilities of sports grounds, bungalows and log houses, as well as the "Utopia Miroku Onsen." There are also a rest spot and a research facility at the "Miroku Fureai Agricultural Park," for those who are interested in enjoying working with the land!

## ■ 花木園 Kaboku-en Park D 4

You can enjoy the trees and flowers in every season throughout the year at Kaboku-en Park, located in the Miroku Nature Park.

春 Spring 夏 Summer 秋 Fall 冬 Winter



桜

cherry blossoms



はす

lotuses



彼岸花

higanbana  
(cluster amaryllis)



水仙、梅

daffodils,  
plum blossoms

## ■ 県立亀鶴公園 Prefectural Kikaku Park

Kikaku Park is an expansive location for viewing beautiful flowers, and it is especially known as a place for viewing cherry blossoms. The cherry blossom tunnel connecting Kamejima and Usa Shrine is not to be missed, and the flowers reflected on the surface of the ponds here, as well as the cherry blossom bridge illuminated at night, are beautiful beyond words. On the shores of the ponds in the park during the summer, the "Hanashobu no Sato" (Japanese Iris Garden) expands before your eyes and the 15,000 blossoms impart the joy of the season.

B 4

TEL : 087-894-1114  
 Access : JR Kotoku Line : Exit at Zoda Station, 10 minute by car  
 Kotoden Nagao Line : Exit at Nagao Station, 5 minute by car  
 By Car : 15 minutes from the Takamatsu Expressway's Shido Interchange

春

Spring

夏

Summer



桜

cherry blossoms



シヨウブ

Japanese irises

# S お買い物 Shopping

## ■ さぬき市物産センター Sanuki Produce Center C1

In the Specialty Products Section on the 1st floor, you can find specialty products of Sanuki City, as well as of many other areas in Kagawa. There is also a section for free taste tests of wine and juice produced at the Sanuki Winery. The café on the 2nd floor is a great location for relaxing and enjoying the view of the Seto Inland Sea. Among the foods listed on the menu at the 2nd floor café are many of the great products that you can also buy on the 1st floor.

TEL : 087-895-1143  
Business Hours : 9:00 - 16:00  
Closed : Tuesdays  
(open for business on holidays)



## さぬきワイン Sanuki Wine

This wine is made at the Sanuki Winery, located right in the city, and produced from grapes grown in Kagawa Prefecture.



## 桐下駄

### Paulownia Geta Sandals

Production of these sandals is a traditional industry in Sanuki City's Shido District, the country's most prolific production area for this product.



## ■ 道の駅ながお Michi no Eki: Nagao B5

Michi no Eki "Nagao" is located between Nagaoji and Okuboji, the 87th and 88th (and final) temples of the Shikoku 88 Temple Circuit. It is a place that pilgrims on the trail often frequent in order to ease their weariness from their long travels. In the specialty product section, you can buy locally produced vegetables, bamboo crafts, bamboo charcoal, etc.

Business Hours : 8:00 - 16:00  
Closed : Tuesdays  
(Open if a holiday falls on a Tuesday, closed the next day)  
TEL : 0879-52-1022



## 竹細工 Bamboo Crafts

These are a traditional industry of Sanuki City's Nagao District.

## ■ みろくふれあい市場 Miroku Fureai Market D4

This is a market with fresh, low-priced vegetables, fruit, and flowers. You can also buy locally produced miroku rice (naturally dried rice), locally produced meats, etc.

Business Hours: 8:30 - 16:30  
Closed: Wednesdays  
TEL: 0879-43-6830



## じねんじょ Jinenjo (Japanese Yam)

A local specialty product of the Minamigawa District of Okawa-machi in Sanuki City, this naturally grown Japanese yam contains lots of proteins and minerals. (Only sold during early December)

## ■ 道の駅みろく D4 Michi no Eki: Miroku

Business Hours :  
Produce Building : 8:00 - 17:00  
Kaisen-an Ariesu Fresh Fish Restaurant :  
Weekdays 11:00 - 14:00  
Weekends & Holidays 11:00 - 14:00,  
17:00 - 21:30  
Closed : Wednesdays  
TEL : 0879-43-0550 (Manager's Office)  
0879-43-1066 (Kaisen-an Ariesu)

## ■ 道の駅 津田の松原 D3 Michi no Eki: Tsuda no Matsubara

TEL : 0879-42-5520  
Business Hours : 9:00 - 17:00

## ■ 津田の松原サービスエリア D4 Tsuda no Matsubara Service Area

TEL : Route to Tokushima : 0879-42-1777  
Route to Takamatsu : 0879-42-0880

## さぬき市の特徴あるうどん Sanuki City's Special Udon

### Uchi-komi Udon 打ち込みうどん

The nostalgic taste of this Sanuki "home cooking," simmered with the season's freshest vegetables and cooked with homemade miso, will warm your body to the core!

### Dojō Udon どじょううどん

Even in Kagawa Prefecture, there are very few shops that make "Dojō Udon," udon noodles which contain the ingredient of dojō, or loach fish. It used to be a variety of udon eaten in households across the prefecture during the rice planting season.



### 市内うどん店一覧 List of Udon Shops in the City

◎ 打ち込み Uchi-komi Udon  
● どじょう Dojō Udon

地域	番号		店名	電話	
志度	① C 3	美登庵(みとあん)	Mito-an	087-895-3233	
	② B 2	いきいさうどん志度店	Iki-Iki Udon Shido	087-894-8333	
	③ B 2	亀城庵(きじょうあん)	Kijoan	087-894-5262	
	④ B 2	うどん屋 剛(つよし)	Tsuyoshi	087-894-1635	
	⑤ B 2	むれ	Mure	087-894-0039	
	⑥ B 2	麺喰(めんくい)	Menkui	087-894-8588	
	⑦ B 2	若鮎(わかあゆ)	Waka Ayu	087-894-0016	
	⑧ B 2	讃岐うどん根っこ志度店	Nekko Sanuki Udon Shido	087-894-6120	
長尾	⑨ C 6	野田屋	Nodaya	0879-56-2028	◎
	⑩ B 7	野田屋竹屋敷(のだやたけやしき)	Nodaya Takeyashiki	0879-56-2288	◎
	⑪ C 6	八十八庵(やそばあん)	Yasoba-an	0879-56-2160	◎
	⑫ B 4	池田家(いけだや)	Ikedaya	0879-52-6528	
	⑬ B 4	いこい	Iko-i	0879-52-2475	●◎
	⑭ B 5	うどん亭いわせ	Iwase	0879-52-5512	
大川	⑮ B 4	嵯峨野(さかの)	Sagano	0879-52-4715	●◎
	⑯ D 5	そらいけ	Sora Ike	0879-43-3777	
	⑰ D 4	みろくふれあい市場うどん店	Miroku Fureai Market Udon Shop	0879-43-6608	
	⑱ D 5				
	⑲ C 4	杉本	Sugimoto	0879-43-3040	
	⑳ D 4	大山製粉製麺所	Oyama Mill & Noodle Factory	0879-43-2323	
津田	㉑ C 4	太一(たいち)	Taichi	0879-43-1333	
	㉒ D 4	津田松原 SA 下り店	Tsuda Matsubara Service Area (to Takamatsu)	0879-42-0880	
	㉓ D 4	津田松原 SA 上り店	Tsuda Matsubara Service Area (to Tokushima)	0879-42-1777	
	㉔ D 3	松の家生麺(まつのやせいめん)	Matsunoya Seimen	0879-42-2148	
	㉕ D 3	羽立(はりゅう)	Haryu	0879-42-2766	
	㉖ D 3	松原うどん(まつばらうどん)	Matsubara Udon	0879-42-5521	
寒川	㉗ C 4	花林亭(かりんてい)	Karintei	0879-43-2103	
	㉘ C 3	麺処まはろ	Maharo	0879-23-2668	◎
	㉙ C 4	春日温泉(かすがおんせん)	Kasuga Onsen	0879-43-6565	

### Kakiyaki (Grilled Oysters) カキ焼き

時期: 11月~3月 Season: November through March

You can enjoy fresh oysters caught in the beautiful Shido Bay. Please come and enjoy this grilled delicacy's simple, elegant flavor.

※Reservation required, so please verify prices and times when you call.



### 市内カキ焼き店一覧 List of Grilled Oyster Restaurants in the City

	店名	番号	電話
カキ焼き わたなべ	Kakiyaki Watanabe	① B 2	087-894-8676
海鮮かき焼き かくれ家	Kaisen Kakiyaki Kakurega	② B 2	087-894-3836
かき焼かじはら	Kakiyaki Kajihara	③ B 2	087-894-6301



# R おすすめコース Recommended Courses

## Model Course

モデルコース



## Train and Walking Course

電車・徒歩コース



## Miroku, Dolphin Course

みろく・イルカコース



## History and Nature Course

歴史・自然コース



## Henro Course

おへんろコース



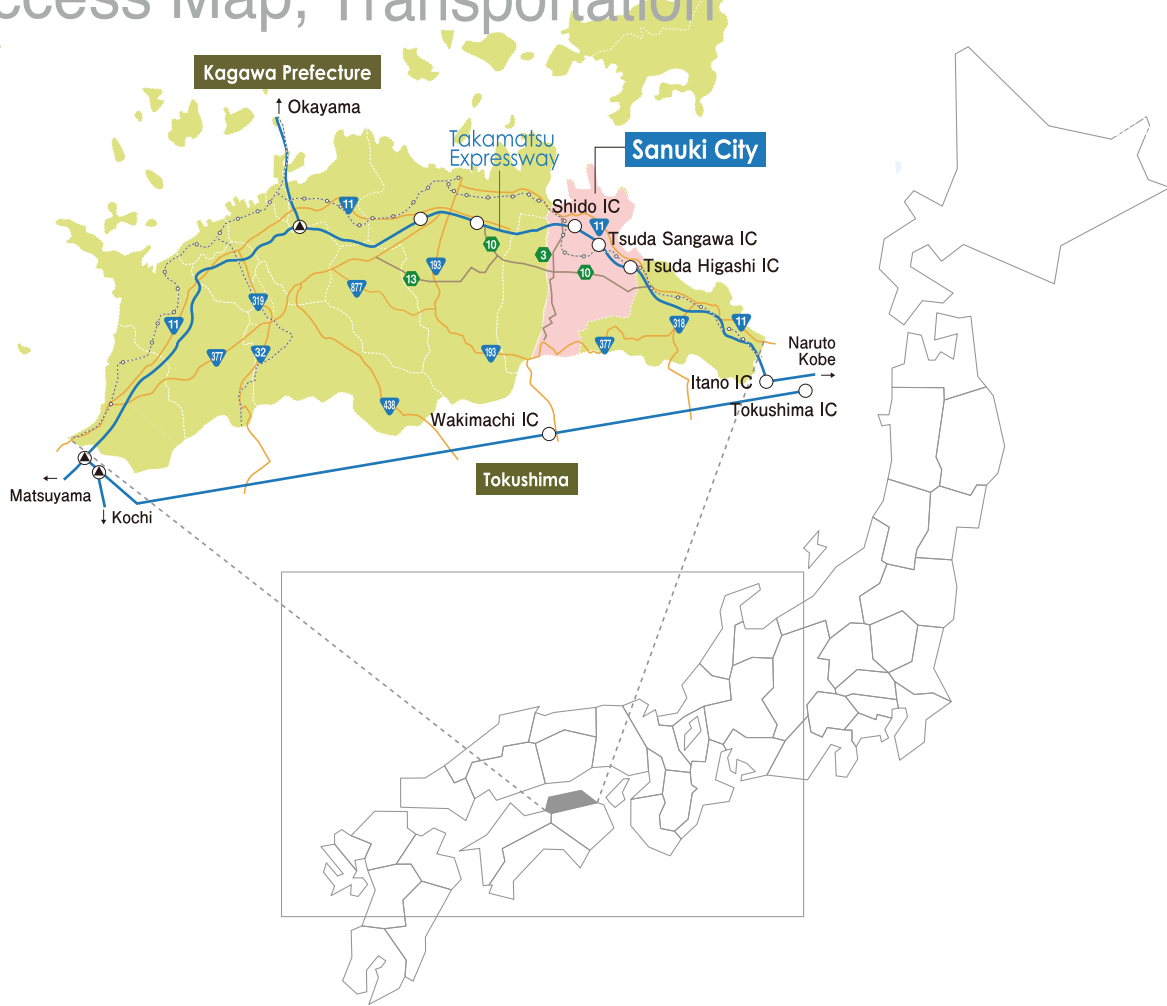
さぬき市観光協会  
Sanuki City Tourism  
Association


住所:さぬき市志度5385-8 さぬき市役所内 TEL:087-894-1114  
休業日:土・日・祝日、年末年始(12/29~1/3) 業務時間:8:30~17:00  
Address: Sanuki City Hall 5385-8 Shido, Sanuki City  
TEL: 087-894-1114  
Closed: Saturdays, Sundays, Holidays, End of Year (12/29 - 1/3)  
Business Hours: 8:30 - 17:00


さぬき市観光案内所  
Sanuki City Tourism  
Information Center


住所:さぬき市志度488番地2(JR志度駅構内) TEL:087-894-7202  
休業日:年末年始(12/30~1/2) 業務時間:9:30~17:30  
Address: 488-2 Shido, Sanuki City (JR Shido Station premises)  
TEL: 087-894-7202  
Closed: End of Year (12/30 - 1/2)  
Business Hours: 9:30 - 17:30

# A アクセスマップ・交通 Access Map, Transportation



JR  From JR Takamatsu Station use the JR Kotoku Line. Exit at Shido Station, Orangetown Station, Zoda Station, Kanzaki Station, Sanuki Tsuda Station, or Tsuruwa Station (Time to Shido Station: about 40 minutes)  
JR

Private Railroad  私鉄  
※ Use the Takamatsu-Kotohira Electric (Kotoden) Railroad  
To Shido: From Takamatsu-Chikko Station take the Kotohira Line or Nagao Line to Kawaramachi Station. Change to the Shido Line and exit at Shido Station (last stop).  
To Nagao: From Takamatsu-Chikko Station take the Nagao Line to Nagao Station (last stop).

By car  自動車  
From Takamatsu City, take Route 11 (National Highway) for about 30 minutes.  
From Takamatsu City, take the Prefectural Takamatsu-Nagao Ochi Road for about 30 minutes.  
From Takamatsu Airport, about 30 minutes.  
From the Donari Interchange, about 30 minutes.  
From the Waki-machi Interchange, about 50 minutes.  
\*Via Takamatsu Expressway (exit at Shido Interchange, Tsuda Sangawa Interchange, or Tsuda Higashi Interchange)  
From the direction of Kobe via the Akashi Kaikyō Ōhashi, about 2 hours 30 minutes. From the direction of Okayama via the Seto Ōhashi, about 2 hours.

1:120,000  
0 1000 2000 3000



1  
2  
3  
4  
5  
6  
7

A B C D E



- School
- National Highway
- Major Local Road
- Prefectural Road
- Main City Road
- Expressway
- J R
- Kotoden Railway
- River



# O nsen (Hot Springs) and Lodging

温泉・宿泊

マーク説明 Key:



温泉があります  
onsen location



宿泊できます  
location with lodging



食事ができます  
location with meals available

■ ゆ〜とびあみろく    

## Utopia Miroku

Beneficial Effects: Easing of blood circulation problems ,chronic digestive ailments, hemorrhoids, etc. This onsen and lodging facility inside the Miroku Nature Park features reclining baths where you can lie down as you bathe in the hot water, baths with medicated waters, saunas, jet baths and more. It is a place where you can refresh both your mind and your body.

TEL: 0879-43-5200

Access:

By train: Exit the JR Kotoku Line at Sanuki Tsuda Station, 10 minutes by car

By bus: Take the Takamatsu-Hiketa Line that goes through Nagao and exit at the "Miroku Shizen Koen-mae" Bus Stop, 10 minute walk

Closed: Wednesdays (open for business on holidays)

<http://www.city.sanuki.kagawa.jp/original/miroku/index.html>



■ クアタラソさぬき津田  

## Quataraso Sanuki Tsuda

Beneficial Effects: Easing of chills, skin ailments, respiratory ailments, women's diseases, bruises, etc. Here you can refresh your whole body in our onsen course and in our complete fitness course. In the onsen course, we introduce Thalassotherapy (Seawater Therapeutic Treatment), which has garnered much attention in Europe, in our outdoor sea-water baths and saunas.



TEL: 0879-42-5888

Access: By train: exit the JR Kotoku Line at Sanuki Tsuda Station, 15 minute walk.

By car:

1. Exit the Takamatsu Expressway at either the Tsuda Higashi Interchange or the Tsuda Sangawa Interchange, drive 5 minutes, turn north at the Tsuruwa Intersection.

2. From Takamatsu City: take Route 11 (National Highway) 22 km east in the direction of Tokushima, turn north at the Tsuruwa Intersection.

Closed: Tuesdays (Open if a holiday falls on a Tuesday, closed the next day)

<http://q-t.anabuki-enter.jp/>

■ ツインパルながお  
Twin Pal Nagao



Beneficial Effects: Easing of neuralgia, muscle ailments, joint ailments, stiff shoulders, etc. This is a place for the whole family's amusement with a hot spring pool, onsen, outdoor baths, a training room, a restaurant, and more. Children and adults alike can enjoy themselves while improving their health.

TEL: 0879-52-1126

Access: Kotoden Nagao Line: Exit at Nagao Station, 20 minute walk

<http://www.city.sanuki.kagawa.jp/original/tuinparu/index.html>





### ■ 春日温泉 Kasuga Onsen C 4

Beneficial Effects: Easing of rheumatic ailments and dulled senses, etc.; help in recovering from disease or fatigue, etc.

TEL: 0879-43-6565  
Access: 20 minute walk from Kanzaki Station  
Closed: Tuesdays



### ■ カメリア温泉 Camellia Onsen C 5

Beneficial Effects: Easing of chills, chronic women's diseases, joint ailments, neuralgia, muscle ailments, high blood pressure; help in recovering from fatigue

TEL: 0879-43-2566  
Access: JR Kotoku Line: Exit at Kanzaki Station, 15 minutes by taxi  
Closed: Thursdays



### ■ クアパーク津田 (国民宿舎 松琴閣) Quapark Tsuda (Shōkinkaku National Inn) D 4

Beneficial Effects: Easing of neuralgia, skin-related ailments, hemorrhoids, digestive organ ailments, stiff shoulders, etc.

TEL: 0879-42-2521  
Access: JR Kotoku Line: Exit at Sanuki Tsuda Station, 15 minute walk  
By car:  
1. Exit the Takamatsu Expressway at either the Tsuda Higashi Interchange or the Tsuda Sangawa Interchange, drive 5 minutes, turn north at the Tsuruwa Intersection.  
2. From Takamatsu City: take Route 11 (National Highway) 22 km east in the direction of Tokushima, turn north at the Tsuruwa Intersection.  
<http://q-p.anabuki-enter.jp/index.html>

# H 遍路 Henro Pilgrimage

## Henro Culture | 遍路文化 |

The Henro Pilgrimage is a one of a kind circuit pilgrimage, which follows the path connecting 88 temples throughout Shikoku, places at which the Buddhist monk Kōbōdaishi Kūkai is said to have conducted his ascetic practices around the year 800. As you walk along the approximately 1400 km of the whole circuit, you can enjoy Shikoku's rich natural scenery, culture, and the warmth of the local people.

### ■ 四国霊場86番札所 志度寺 B 2

## Temple #86: Shidoji

In addition to the main hall and the cinnabar-colored, 33 meter tall five-storied pagoda, there are also two Kongōrikishi (Buddhist gods that guard temple gates), which were created by the famous Buddhist sculptor, Unkei, and which flank both sides of the temple's Niomon Gate. There is also a kyokusui-style garden (rare even in Japan) and the Musentei Garden, whose landscape evokes the Ama no Tamatori Legend. With all of these wonderful sites, there is an endless flow of visitors to Shido Temple.

TEL: 087-894-0086  
Access: By car  
7 minutes from the Takamatsu Expressway's Shido Interchange  
JR Kotoku Line: 10 minute walk from Shido Station  
Kotoden Shido Line: 8 minute walk from Kotoden Shido Station



■ 五重塔  
Five-storied Pagoda



■ 無染庭  
Musentei Garden



■ 仁王門  
Niomon Gate



■ 四国霊場87番札所 長尾寺

Temple #87:

# Nagaoji

B 4

TEL: 0879-52-2041

Access:

JR Kotoku Line:

5 minutes by car from Zoda Station

Kotoden Nagao Line:

5 minute walk from Nagao Station

By car: 15 minutes from the Takamatsu Expressway's

Shido Interchange

Nagaoji has been hailed as a flourishing, famous temple since the Kamakura Period, and in front and to either side of the temple's gate are a pair of hand-copied sutras that have been buried in the ground and together are designated as National Important Cultural Property. There is a famous story in which Shizuka Gozen came to Nagaoji with her mother (the nun Iso no Zenji), following the death of her lover (the famous warrior Yoshitsune) and their son, in order to become a Buddhist nun herself. Memorializing this event at Nagaoji are a Buddhist mortuary tablet and a burial mound in which is said to be kept a lock of Shizuka's hair, which was taken when she took the tonsure.



■ 剃髮塚

Burial mound with lock of Shizuka's hair.



■ 寶杖堂 (ほうじょうどう)

Hōjōdō

Pilgrims who have completed the Shikoku Henro Pilgrimage leave their kongōzue walking staffs here as an offering.



■ 四国霊場88番札所・結願の寺

大窪寺

C 6

# Temple #88: Ōkuboji

(Final Temple of the 88 Temple Circuit)

Ōkuboji is the final temple of the entire Henro Pilgrimage that goes around Shikoku. When pilgrims finally come to the conclusion of their long journey here, they leave behind their sedge hats and kongōzue walking staffs as offerings before heading home. Large numbers of people come to pray at and visit Ōkuboji throughout the year. Also, in the autumn, the ginkgo and Japanese maple trees inside the temple precinct turn beautiful colors, making this a famous spot for autumn leaf viewing.



TEL: 0879-56-2278

Access:

Kotoden Nagao Line:

30 minutes by car from Nagao Station

By car:

1. 40 minutes from the Takamatsu Expressway's Shido Interchange.

2. 30 minutes by car from the Tokushima Expressway's Waki-machi Interchange

■ 紅葉

Autum leaves



## Other Items of Interest | 番外編 |



■ 丁石

Chōseki

These are stone markers placed on the Henro Road, marking off the distance until Ōkuboji Temple.



■ 道標 Dohyo

Since long ago these road signs have marked the Henro Road. Veteran pilgrims have been kind enough to place these signs at forks in the road, with indications of the direction and distance to the next temple, so that the pilgrims following in their footsteps might safely find their way.



■ 休憩所

Rest Spot

This rest spot has been built so that pilgrims visiting the 88 Temples on the Pilgrimage can stop and rest.



■ 山頭火句碑

Haiku Monument of Taneda Santōka

On the Henro Road, you can have a literary adventure since there are more than 60 kuhi (stone monuments inscribed with haiku poems) that are erected alongside the road that Kōbōdaishi once traveled and taken from poems written by Taneda Santōka, the itinerant haiku poet, who traveled the Henro Pilgrimage twice.